

# **SUMMER 2007 GPCA PLENARY**

## **Center for Community Action and Environmental Justice**

### **Sept. 8-9, Riverside, CA**

#### **HOST COMMITTEE INFORMATION**

General Contacts:

Chuck Reutter, 951-679-3572, [greenchuckr@hotmail.com](mailto:greenchuckr@hotmail.com)

Nanette Pratini, 951-686-5542 (home), 951-534-7507 (cell), [npratini@greens.org](mailto:npratini@greens.org)

Transportation Contact:

Chuck Reutter, 951-679-3572, [greenchuckr@hotmail.com](mailto:greenchuckr@hotmail.com)

Housing Contact:

Nanette Pratini, 951-686-5542 (home), 951-534-7507 (cell), [npratini@greens.org](mailto:npratini@greens.org)

#### **LOCATION**

All events will be at the Center for Community Action and Environmental Justice (CCAECJ), located approximately 6 miles east of downtown Riverside in the community of Glen Avon (see Map 1). CCAECJ was founded in the early 1980's by Penny Newman in response to the pollution caused by the Stringfellow Acid Pits, an EPA Superfund site, located just across Hwy. 60. See <http://www.ccae.org> for more information about the wonderful work they do. We are thrilled to support this fine organization with part of your registration fees and will be showcasing more of their work during the Saturday evening event.

#### **TRANSPORTATION**

##### **AIRLINE SERVICE TO RIVERSIDE**

The closest full-service commercial airport to the plenary is Ontario International Airport (ONT), located less than 15 miles from the Plenary site (Map 1). Several major airlines serve the airport. <http://www.lawa.org/ont/>

Door-to door van service and taxis are available curbside at the "islands" in front of the baggage terminal. [http://www.lawa.org/ont/dtd\\_Van.cfm](http://www.lawa.org/ont/dtd_Van.cfm). Reservations are not required for going from the airport to your destination. For more information or to schedule a ride to the airport:

<b>Door-to-Door Vans and Taxi's</b>		
Apollo Shuttle	(877) 927-6556	<a href="http://www.apolloshuttle.net/">http://www.apolloshuttle.net/</a>
Bell Cab Company	(800) 340-8294	
Discount Shuttle	(800) 699-4826	
Express Shuttle	800-644-7433	<a href="http://www.xpressshuttle.com">http://www.xpressshuttle.com</a>
Go Fly Airport Shuttle service	(909) 772-8516	<a href="http://www.goflyairportshuttle.com">http://www.goflyairportshuttle.com</a>
New Express	(877) 977-3748	<a href="http://www.newexpresstransportation.com/default.aspx">http://www.newexpresstransportation.com/default.aspx</a>

Transportation		
Prime Time Shuttle	(800) 262-RIDE (7433)	<a href="http://www.primetimeshuttle.com/SoCal.htm">http://www.primetimeshuttle.com/SoCal.htm</a>
SuperShuttle	(800) 700-1983	<a href="http://www.supershuttle.com">http://www.supershuttle.com</a>
Yellow Cab Company	(800) 305-8294	

:

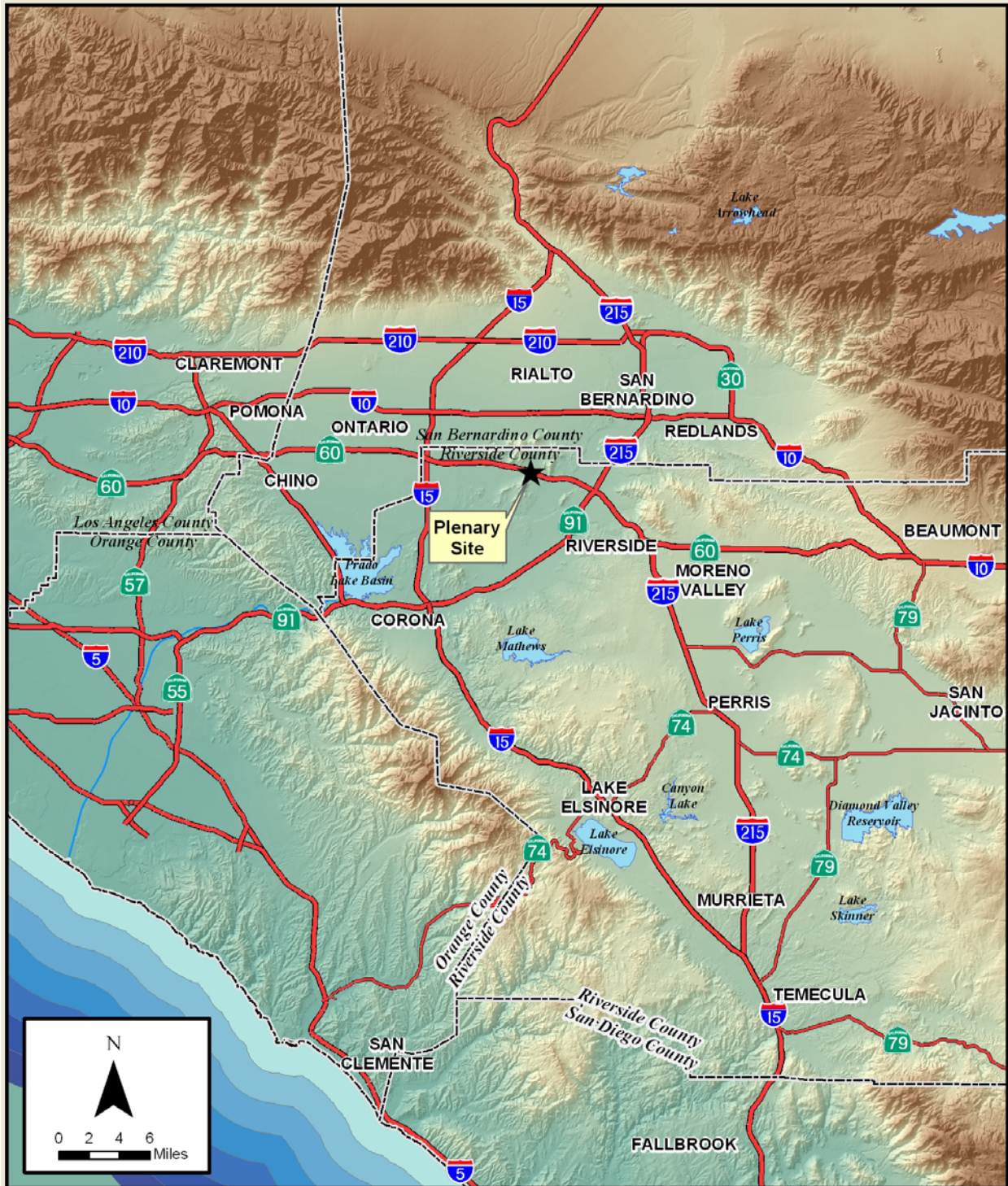
A sample one-way fare from the airport to University Avenue in Riverside is \$37.

We will be able to arrange a pick up or drop-off for you if you let us know what time you will be arriving or departing and which airline you are using (so we know which terminal to go to). Contact Chuck at [greenchuckr@hotmail.com](mailto:greenchuckr@hotmail.com) or 951-679-3572.

### **CHILDCARE**

Please notify in advance if childcare is required, and we will more than likely be able to accommodate you.

Map 1, Regional Location:



## TRAIN, BUS, AND METROLINK SERVICE TO RIVERSIDE

We will be able to arrange a pick up or drop-off for you if you let us know what time you will be arriving or departing. Contact Chuck at [greenchuckr@hotmail.com](mailto:greenchuckr@hotmail.com) or 951-679-3572. See table for phone and website info.

### AMTRAK

Several routes pass through, Riverside Station is closest (#12, Map 2):  
4066 Vine St.,  
Riverside, CA 92507

METROLINK is a rail service connecting parts of LA, Ventura, Orange, Riverside and San Bernardino counties. It shares the Downtown Riverside station with Amtrak.

The closest station to the meeting site is Pedley (#13, Map 2) on the Riverside Line, but there is NO WEEKEND SERVICE.

Pedley Station:

6001 Pedley Road  
Riverside, CA 92509

\$8.75 1-way fare from LA Union Station.

Last train out Friday arrives Pedley 6:33pm, or you can continue into Downtown Riverside Station, arriving 6:52pm.

Weekend service is provided on the Orange County Line (to the Riverside Downtown Station)

Weekend service is also offered on the San Bernardino Line. Closest station to meeting site is Rialto, and it also goes to the Riverside Downtown Station.

GREYHOUND has several routes that go through Riverside.

Riverside Greyhound Station (#15, Map 2):

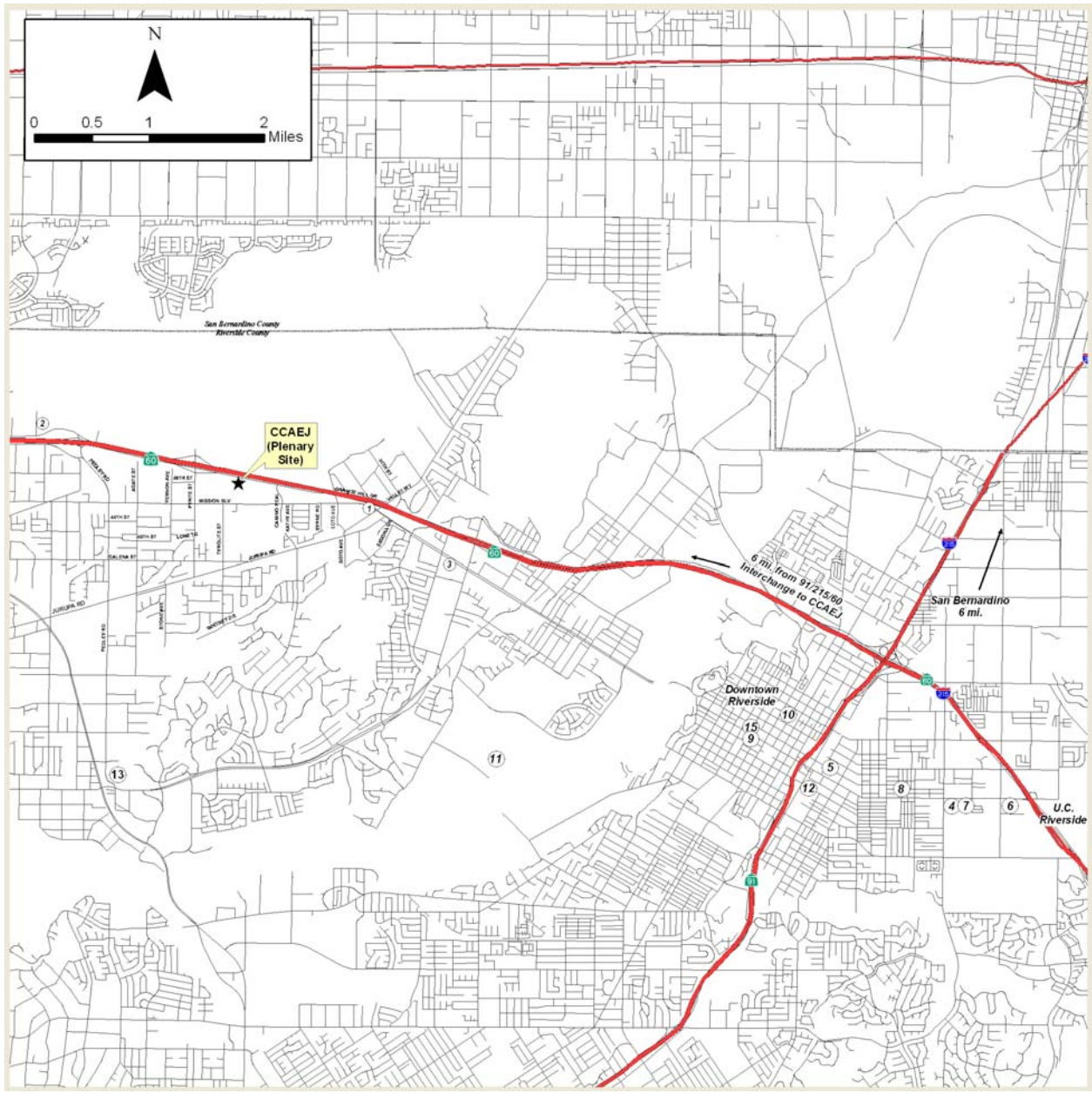
3911 University Ave.

Riverside, CA 92501

<a href="#">Amtrak</a>	<a href="http://www.amtrak.com">www.amtrak.com</a>	1.800.U.S.A.RAIL (1.800.872.7245)
<a href="#">Metrolink</a> (Pedley Station on Riverside Line is closest to CCAEJ)	<a href="http://www.metrolinktrains.com">www.metrolinktrains.com</a>	1.800.371.LINK (1.800.371.5465)
<a href="#">Greyhound</a> (terminal in downtown Riverside)	<a href="http://www.greyhound.com">www.greyhound.com</a>	1.800.229.9424
<a href="#">Metro Bus and Rail</a> (Greater Los Angeles Area, including Metrolink connections)	<a href="http://www.metro.net">www.metro.net</a>	1.800.COMMUTE (1.800.266.6883)
<a href="#">Omnitrans</a> (Buses serving San Bernardino Co.)	<a href="http://www.omnitrans.org">www.omnitrans.org</a>	1.800.966.6428
<a href="#">Riverside Transit Agency</a> (Buses serving Riverside Co.)	<a href="http://www.riversidetransit.com">www.riversidetransit.com</a>	1.800.800.7821



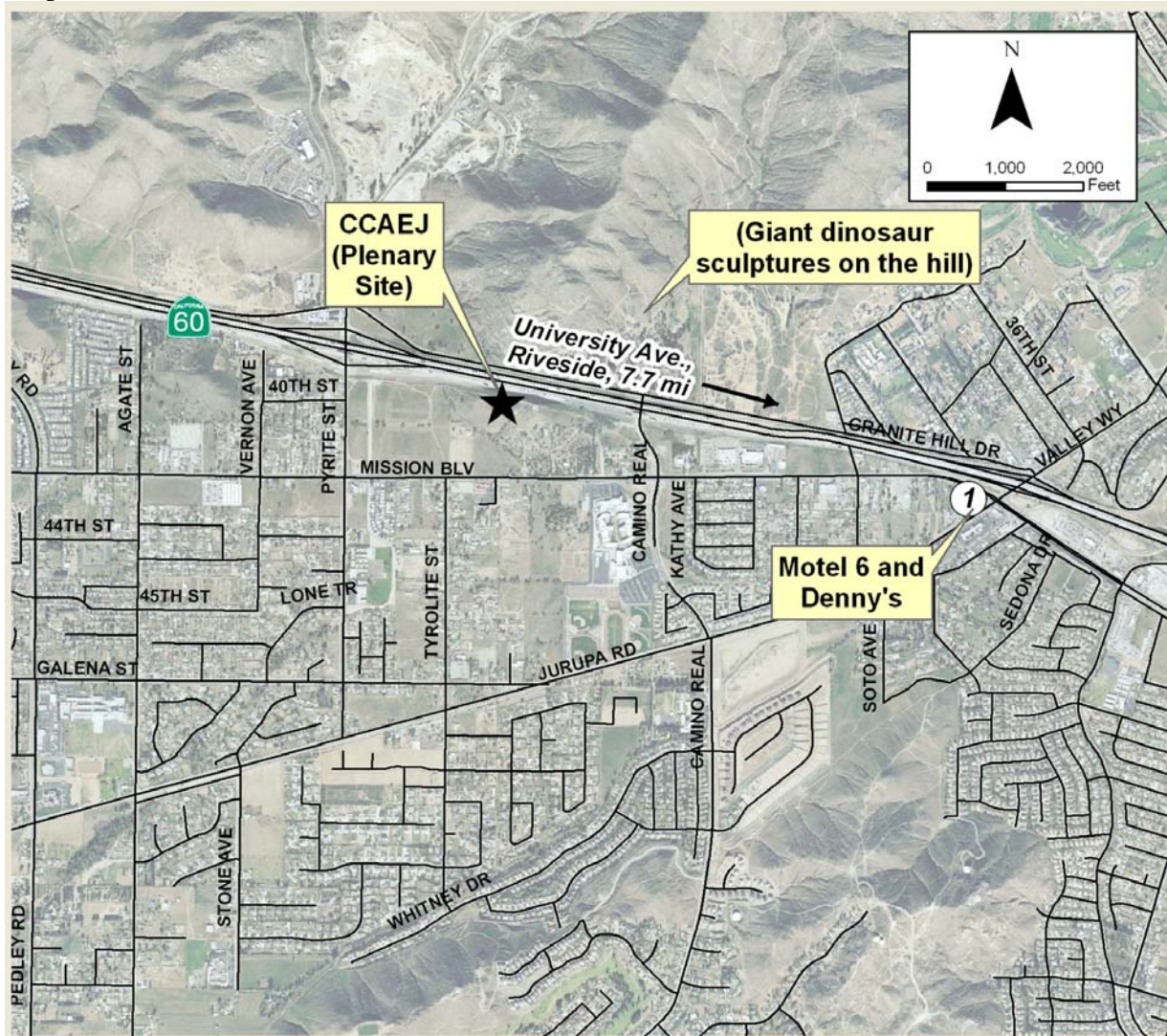
Map 2, train station, hotels, etc.:



## **PLENARY DIRECTIONS BY CAR**

Center for Community Action and Environmental Justice (CCA EJ)  
7701 Mission Blvd.  
Riverside, CA

Map 3, Close View:



<b>Directions from Los Angeles</b>	<b>Directions from Riverside</b>
From Los Angeles follow Highway 60 east toward Riverside (you will pass the 15 freeway). Take the Pyrite exit. Turn right onto Pyrite.	From Riverside follow Highway 60 west toward Los Angeles (you will pass the Valley Way exit) Take the Pyrite exit. Turn left onto Pyrite.
Continue on Pyrite until the first signal light. At the signal light, turn left onto Mission Blvd. Continue on Mission Blvd about 0.6 miles. On your left you will see a mobile home park (Santa Fe Mobile Park, 7721 Mission Blvd.) After the mobile home park, turn left onto a wide dirt road. (There is a sign for "CCA EJ") Keep going straight on the dirt road until it becomes paved. Follow the curving paved road up the hill and look for the signs saying where to park.	



## **PLENARY LODGING**

### **HOMESTAYS**

Local homestay availability is limited and will be assigned on a first-come first-served basis. If you know someone you can stay with that will be commuting from Orange or Los Angeles counties, that is an option for you to consider. You can indicate your interest in a homestay arrangement on your [plenary registration form](#) (on-line). If you have specific homestay needs, for instance, you're allergic to cats or tobacco or want to make sure you stay with someone who has transportation to the plenary site, please e-mail us at [npratini@greens.org](mailto:npratini@greens.org) or call (951) 686-5542.

### **CAMPING**

Camping is available nearby at Rancho Jurupa Park for approximately \$20/night. (See #11 on Map 2).

[http://www.riversidecountyparks.org/park-directory/all-parks/rancho\\_jurupa/](http://www.riversidecountyparks.org/park-directory/all-parks/rancho_jurupa/)

From the website:

4800 Crestmore Road, Riverside CA 92509-6839 | Phone: (951) 684-7032 1.5 mi. S of Mission Blvd. on Crestmore Road. 67 sites available, 12 with full hook-ups, 55 with water & electric. Located along the Santa Ana River near Riverside, it is a 200-acre recreation and fishing area, with individual camping available by reservation or on a first come, first served basis. There are also primitive camping, primitive equestrian camping group areas and group day-use facilities, all requiring reservations. In a setting of stately cottonwood trees and pleasant meadows, visitors can camp, fish, picnic, and ride horses and bikes. The 3-acre lake is a favorite local fishing spot.

### **LOCAL HOTELS (All non-union)**

<b>Map No.</b>	<b>Name</b>	<b>Price* Singl/DbI</b>	<b>Telephone</b>	<b>Address</b>
1	Motel 6 Riverside West #0398 (tell manager you are with Green Party)	\$50/56	(951) 681-6666 or 1-800-544-4866	6830 Valley Way Rubidoux, CA, 92509
2	Circle Inn Motel	\$54/60	951-360-1132	9220 Granite Hill Dr Rubidoux, CA, 92509
3	Palm View Motel	\$45/55	951-686-6455	6038 Mission Bl Rubidoux, CA, 92509
4	Comfort Inn	\$90/100	951-683-6000	1590 University Ave., Riverside
5	Thunderbird Lodge	\$75/85	951-683-2070	2711 University Av, Riverside

6	Motel 6 #1302	\$56/62	951-784-2131	1260 University Ave., Riverside
7	Mariott Hotels and Resorts	\$109/109	951-276-1200	1510 University Ave., Riverside
8	Budget Inn of Riverside	\$52+/62+	951-686-8888	1911 University Ave., Riverside
9	America's Best Value Inn	\$60/70	951-686-6666	4045 University Ave., Riverside
10	Mariott Hotels and Resorts	\$119/119	951-784-8000	3400 Market St., Riverside

\* Rates are subject to change and do not include 10% hotel tax.

### **PAYMENT INSTRUCTIONS**

Use PAYPAL online through GPCA website ([www.cagreens.org/plenary/](http://www.cagreens.org/plenary/)), or mail your contact information, county, and delegate status with a check (payable to Green Party of Riverside County to:  
Green Party of Riverside County  
P.O. Box 2056  
Sun City, CA 92586-2056

### **Plenary Fees**

Pre-registration by midnight Wednesday, September 5:  
\$35 for Saturday and Sunday, breakfasts and lunches included  
\$7 for Saturday Night dinner, event is free

Walk-in registration:

\$10 per day without meals

\$20 per day with meals

### **FOOD, ETC.:**

\*\*\*Please bring your own service-ware if possible!\*\*\* There will be facilities available on-site for washing your plates, cups, and utensils after meals.

All meals will be vegetarian with vegan options. Breakfasts will be an assortment of breads, fruits, and drinks. Lunches will be served by our local Food Not Bombs and will be all vegan. Dinner Saturday evening will be a catered Indian buffet. There are a few restaurants located along Mission Blvd. and several along University Ave. in Riverside. We will provide a list of selected restaurants at the meeting.

The Friday night CC meeting will tentatively be held at the Denny's across from the Motel 6 at Valley Way and Hwy 60 (see Map location #1). The Saturday evening entertainment and dinner as well as the GPUS Delegate's meeting will be held in separate areas at CCAEJ.