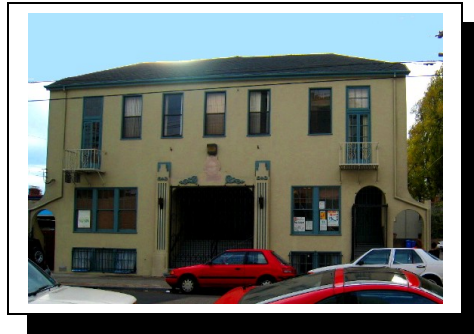


Alameda County Green Party

2011 SPRING PLENARY LOGISTICS PACKET

Saturday and Sunday, April 30th - May 1st, 2011



The Berkeley Finnish Brotherhood Hall
1970 Chestnut Street @ University Avenue
Berkeley, California 94702

For local information, updates and links, please visit:
www.acgreens.wordpress.com

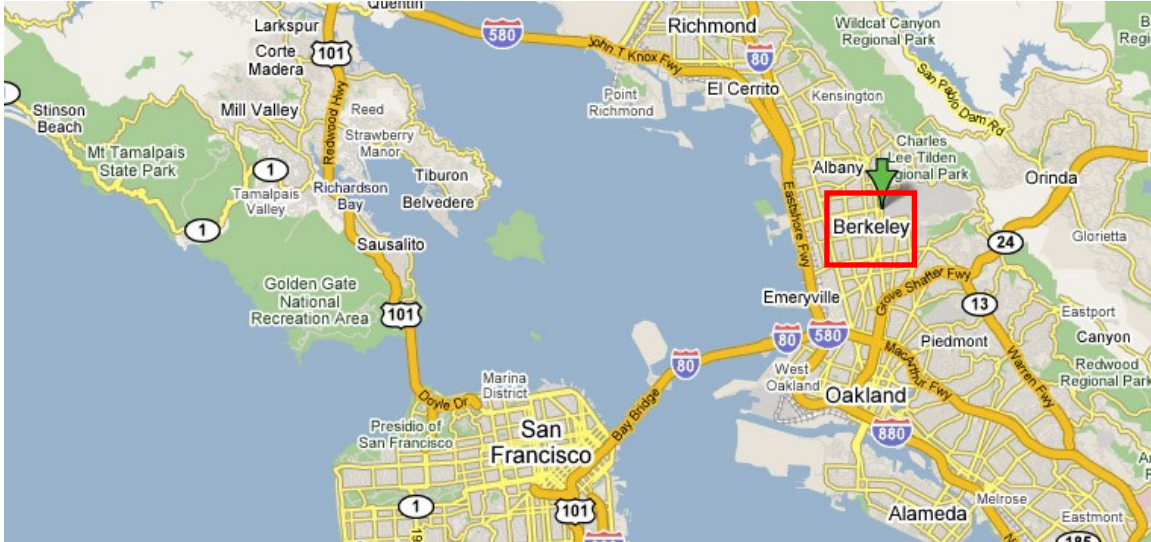
For registration and agenda information, please visit:
www.cagreens.org/plenary

CONTENTS

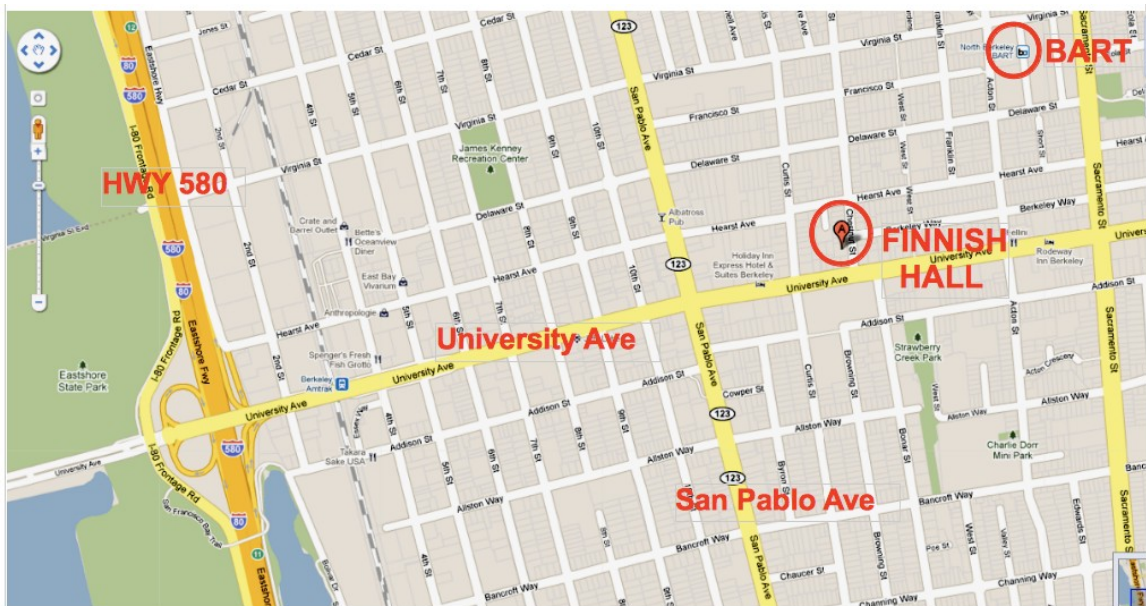
MAPS – Bay Area, Berkeley, Finnish Hall Area
TRAVEL TO BERKELEY - Train, Bus, Car, Air
PUBLIC TRANSIT - BART, ACTransit, Muni
PLACES TO STAY – Hotels, Hostels, Home-stays
REGISTRATION, FEES, CONTACTS

MAPS

The City of Berkeley in the Bay Area:



The Plenary location in Berkeley: The Finnish Hall, 1970 Chestnut St. (about 7 blocks from the North Berkeley BART station)



EVENT DETAILS

FRIDAY, APRIL 29th, 2011

The **State Coordinating Committee Meeting** on Friday night will be at the **Grass Roots House** and will start at **6 pm**. The Grass Roots House is at **2022 Blake Street** in Berkeley, a block south of the corner of Dwight Way and Shattuck Ave. (Located between Milvia and Shattuck, about 6 blocks south of downtown Berkeley. The Alameda County Green Party has its office there, 510-644-2293).

SATURDAY, APRIL 30th, 2011

Finnish Hall: The Meeting Room

The "Finn Hall" (*not* the Finnish Hall on 10th St.) is at **1970 Chestnut Street** in Berkeley and is just 2 doors north of University Ave.. It's about halfway between San Pablo and Sacramento streets, about 7 blocks from the North Berkeley BART station. The main entry to the Finnish Hall is on Chestnut St.

On Saturday we will be in "**The Meeting Room**" which is located **upstairs** and signs will direct people where to go. There is one bathroom located directly off the Meeting Room. Unfortunately there is no handicapped access. We will set-up around 7:30 or 7:45 am and we must end everything by 9:30 pm on Saturday evening. We will have several take-out menus available in the morning for those who will be eating dinner on Saturday evening.

Parking: We **do not** have access to parking in the Finnish Hall parking lot on Saturday. However, there is a lot of parking on side streets. Side streets have no "2-hour-limit", as much of the rest of Berkeley does, except on University Ave., which has meters.

SUNDAY, MAY 1st, 2011

Finnish Hall: The Cafe Room

On Sunday we will use "**The Cafe Room**," located on the **lower level** of the Finnish Hall, and the entrance to that room is **from the parking lot on the North side of the building**. There are two bathrooms available for use on that floor on Sunday. We will set-up around 7:30 or 7:45 am on Sunday morning and we must end everything by 4:00 pm on Sunday afternoon.

Parking: We **do** have access to parking at the Finnish Hall on Sunday and the parking area is directly adjacent to the building.

TRAVEL TO BERKELEY

To reach Finn Hall: take BART to the North Berkeley BART station. From the BART station, walk 4 to 5 blocks west on Delaware St. to Chestnut St. and turn left. Then walk 2 to 3 blocks south on Chestnut St -- Finn Hall is on your right, at 1970 Chestnut St. Pam Spevack is our Transportation Coordinator: coreluv@yahoo.com, 510-593-0063.

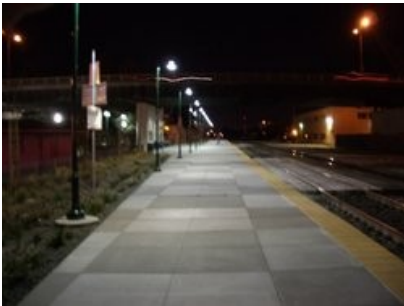
BY TRAIN

The **Berkeley AMTRAK station** is at **University Ave. and 3rd St.**, about 10 blocks from Finn Hall. You can either walk the 10 blocks, or take a **51B AC Transit bus**. The buses are spaced approximately 30 minutes apart -- the weekend 51B bus schedule is here: http://www.actransit.org/maps/schedule_results.php?quick_line=51b&Go=Go&version_id=14&maps_line=51b¤t_schedule=7261

Amtrak (www.amtrak.com 1-800-872-7245) connects to San Francisco via Greyhound Bus. The San Joaquin Valley and the Capitol Corridor lines stop in Berkeley on University Avenue 10 blocks from Finn Hall (and two miles west of the UCB campus).

The Capitol Corridor is a 172-mile (275 km) runs daily from the San Francisco Bay Area to Sacramento, roughly parallel to Interstate 80.

Capitol Corridor Amtrak Station



The Berkeley Amtrak Station is located beneath the University Ave

Overpass at 3rd St. and consists of only a platform waiting area. Since this station is an unstaffed station you must buy tickets on the train. Be aware that trains can be late . . .



The Emeryville Amtrak Station

5885 Horton Street, Emeryville, CA 94608

Phone: Capitol Corridor: (1-877-974-3322)

All Others: 1-800-USA-RAIL

This station is staffed from:

6:15 a.m. – 10:00 p.m.



BUS

Greyhound -- <http://www.greyhound.com>

Greyhound Bus stops in Oakland and San Francisco but not Berkeley, and is one of the cheapest methods of transportation, also known as “the Dirty Dog”.

Greyhound Oakland - (510) 832-4730

2103 San Pablo Ave

Greyhound San Francisco - (415) 495-1569

425 Mission St

CARPOOLING

The Bay Area’s Craigslist - <http://sfbay.craigslist.org>

The local craigslist is very active (‘Craig’ lives in SF) and we recommend posting for carpooling options on there or your local craigslist. Posting on Craigslist is easy, but scams are not infrequent either, so use common sense in your interactions with anyone you meet on there.

DRIVING

From San Francisco, the San Francisco airport, and points south on northbound Highway 101:

- Follow U.S. 101 north and then switch to I-80 east, and take it across the San Francisco/Oakland Bay Bridge
- Stay left as you get off the Bay Bridge and take I-80 east heading to Berkeley & Sacramento
- Exit I-80 onto University Avenue in Berkeley
- Continue east about 12 blocks on University Avenue until you reach Chestnut, then take a left.

From Oakland, the Oakland airport, Hayward or San Jose on northbound I-880:

- Stay in left center lanes on I-880 when you reach downtown Oakland
- A few miles past the 980 interchange, take I-80 east (to Berkeley)
- Exit I-80 at University Avenue
- Continue east about 12 blocks on University Avenue until you reach Chestnut, then take a left.

From the East Bay on I-80 bound either east or west

- Exit University Avenue in Berkeley
- Continue east about 12 blocks on University Avenue until you reach Chestnut, then take a left.

From the East Bay on westbound I-580:

- Exit I-80 East (to Berkeley & Sacramento)
- Exit at University Avenue
- Continue east about 12 blocks on University Avenue until you reach Chestnut, then take a left.

FLYING

BART to/from Oakland Airport (OAK)

AirBART is a shuttle bus and is the best way to get between BART and the Oakland Airport. It runs approximately every 10 – 20 minutes. The AirBART shuttle trip goes to

the Coliseum/Oakland BART Station and takes about 15 minutes, depending upon traffic. From there, take the Richmond train to the North Berkeley BART station.

BART to/from San Francisco Airport (SFO)

BART fares are very economical when compared with other modes of travel to the San Francisco Airport and BART now goes directly into the International Terminal at SFO. You can either walk or take a free AirTrain shuttle from your SFO terminal to the BART station. All domestic flights are approximately a five to ten-minute AirTrain ride to the BART station. When headed to Berkeley from the airport via BART, take any eastbound train to the Balboa Park station and transfer to a Pittsburg/Bay Point train (or during Saturday daytime to a Richmond train). Then, if you're on a Pittsburg/Bay Point train transfer to a Richmond train at the 12th St. (Oakland) station. Finally, get off at the **North Berkeley** station and walk west on Delaware St. about 5 blocks, then south on Chestnut St. about 3 blocks to 1970 Chestnut St.

Airport Shuttles from Oakland or San Francisco International Airport

Airport shuttles provide door-to-door service and are available just outside the airports, but cost much more than BART, from \$20 - \$40. Reservations recommended.

Taxi

Taxi fare to Berkeley will be approximately \$40 from the Oakland Airport and \$55 from the San Francisco airport.

PARKING

We **do not** have access to parking in the Finnish Hall parking lot on **Saturday**. However, there is a lot of parking on side streets. Side streets have no "2-hour-limit", as much of the rest of Berkeley does, except on University Ave., which has meters.

We **do** have access to parking at the Finnish Hall on **Sunday** and the parking area is directly adjacent to the building.

PUBLIC TRANSIT IN THE BAY AREA

LOCAL PUBLIC TRANSIT IN THE BAY AREA

The main two forms of public transit in the Bay Area are **BART** trains and the bus systems, “**AC Transit**” in the East Bay (Berkeley and Oakland) and “**MUNI**” in San Francisco. We recommend BART if you are located outside of Berkeley or happen to be near a station in Berkeley, since buses are as far slower and less reliable. **AC Transit and MUNI are both slow and unreliable** but are cheap.

BART (Bay Area) – www.bart.gov



Bart trains stop running around midnight. The website has an excellent interactive scheduling system so you can plan your trip easily. The closest stop is **NORTH BERKELEY BART**.

AC Transit (East Bay - Berkeley and Oakland) – <http://www.actransit.org>



Bus number 51B serves University Ave. from the Amtrak station to Downtown Berkeley, and beyond. Fares are \$2.00 and \$1.00 for seniors, transfers are \$.25. For fares, times, (and other bus line routes), see the www.actransit.org call (510) 839-2882.

MUNI (San Francisco) – <http://www.sfmuni.com>

The San Francisco Municipal Railway, commonly called Muni. The normal fare is \$2.00, with the fare receipt/transfer valid for a 90 minute window on any Muni vehicle aside from the cable cars. Fares for disabled, children, and people over 65 are less. SF's Cable

Car fare is separate from the rest of Muni with a one-way fare costing \$5.00.



Bart Map showing the station to exit for the Plenary at Finn Hall

PLACES TO STAY

HOTELS NEAR THE FINNISH HALL

La Quinta/Best Western Inn (920 University Ave.) is about 5 or 6 blocks away from Finn Hall. Orbitz lists their rooms at \$65+. 510-849- 1121

The Rodeway Inn (1461 University Ave.) is about 3 blocks away from Finn Hall. Orbitz lists their rooms at \$73+. 510-848-3840

The Holiday Inn (1175 University Ave.) is only one block away from Finn Hall. Orbitz lists their rooms at \$109+. 510-548-1700

For those interested in staying near UC, Berkeley, below are a few selected hotels within about a mile from the UCB campus, in approximate increasing distance from UCB campus. All prices are approximate (based on <http://travel.yahoo.com> , which also lists additional Berkeley hotels). Descriptions of most of these hotels can be found at: <http://www.visitberkeley.com/accommodations.cfm> and websites for many of these hotels are listed at: <http://calparents.berkeley.edu/guide/visiting/stay.html>

[Bancroft Hotel](#)

2680 Bancroft Way · Berkeley, \$139 per room
(800) 549-1002, 510-549-1000 · 22 Rooms

[Hotel Durant](#)

2600 Durant Ave. · Berkeley, \$169 per room
(800) 238-7268, 510-845-9881 · 130 Rooms · 10 Suites

[Rose Garden Inn](#)

2740 Telegraph Ave. · Berkeley, \$119 per room
(800) 992-9005, 510-549-2145 · 42 Rooms

[Travelodge Berkeley](#)

1820 University Ave. · Berkeley, \$101 per room
(800) 578-7878, 510-843-4262 · 30 Rooms

[The French Hotel](#)

1538 Shattuck Ave. · Berkeley, \$95 per room
510-548-9930 · 18 Rooms

HOSTELS

There are just a few hostels in the Bay Area and are all across the water in SF or Marin. You would need a car for the Marin one, which is a significant drive away, but in a great location.



San Francisco City Center Hostel

685 Ellis Street

San Francisco, CA 94109

Phone: (415) 474-5721

<http://sfhostels.com/city-center/>

San Francisco Downtown Hostel

312 Mason Street

San Francisco, CA 94102

Phone: (415) 788-5604

<http://sfhostels.com/downtown/>

San Francisco Fisherman's Wharf Hostel

Fort Mason, Building 240

San Francisco, CA 94123

Phone: (415) 771-7277

<http://sfhostels.com/fishermans-wharf/>

Marin Headlands Hostel

(415) 331-2777

A [certified green business](#), Marin Headlands Hostel offers both shared and private rooms, as well as cozy guest lounges, fully equipped kitchens, and amenities including Internet facilities, on-site laundry, and free parking.

<http://norcalhostels.org/marin/>

HOME-STAYS

Your host committee will be providing as many home stay opportunities as we can. Please reserve early and email the Home-stay Coordinator with your needs, including:

Name: _____

Phone: _____

Email: _____

Number of nights: _____ Time & date of arrival: _____

Which sessions: _____

Number of people in party: _____

Smoker? _____ Agree to outdoor smoking only? _____

Okay with smokers in host house? _____

Any allergies: _____

Can you bring a sleeping bag, and if so, is floor space for it okay? _____

Other special needs? _____

Home-stay Coordinator:

Victoria Ashley:
(510) 637-9036 (cell)
victronix01@yahoo.com

WEATHER

The Bay Area is generally warm and sunny and breezy (60s – 70s), and cold at night (40s- 50s). We recommend layers – a lighter layer is best for the sunny hot noontime, but have a warmer layer on hand for morning and evenings, and a jacket for night time. Rain is rare in April in the Bay Area, but not impossible. To see the latest weather, just type in “Berkeley weather” into google, and have a look.

REGISTRATION, FEES, CONTACTS

REGISTRATION

Online Registration

www.cagreens.org/registration

State Plenary site

www.cagreens.org/plenary

FEES

\$45 - two days (or \$40 if registered by 4/27) / \$23- single day

- Breakfast and Lunch included
- Evening event and any related charges:
 - Saturday evening dinner we will order "take-out" from nearby restaurants: we ask that everyone who will be staying for dinner choose their selection and give us their payment for it on Saturday morning
 - Updates will be made available at:
www.acgreens.wordpress.com
- **Payment**
 - Make checks payable to:
Green Party of Alameda County
2022 Blake St.
Berkeley, CA 94704
 - Or, register and pay on-line (via PayPal) at:
<http://cagreens.org/registration/>

CONTACTS

If you have further questions, please call or email:

Greg Jan: gregjan4@yahoo.com 510-444-7336

Housing (home stay) contact:

Victoria Ashley: victronix01@yahoo.com 510-637-9036

Transportation contact:

Pam Spevack: coreluv@yahoo.com 510-593-0063